

For 65 years Richlite Company has been devoted to producing a quality product from renewable materials. Our employees will always be committed to improving the sustainable practices of our company without sacrificing quality.

Richlite's sustainable manufacturing and LEED® credit information:

MR Credit 3: Materials Reuse

Durability is a primary attribute of Richlite. Richlite will last a lifetime – whether it stays in its original installation or is re-fabricated into another project. Richlite can be easily refinished to its original appearance.

MR Credit 4: Recycled Content

Richlite r50 product contains 50% of fibers from post consumer waste. Richlite r100 product contains 100% of fibers from post consumer waste and is also FSC-Certified.

MR Credit 5: Regional Materials

Richlite products are manufactured in Tacoma, Washington. Richlite's r50 and r100 paper suppliers and Richlite's resin supplier are within 200 miles of the manufacturing plant.

MR Credit 6: Rapidly Renewable Materials

Richlite FSC-Certified products are composed of 30% Eucalyptus fibers. Richlite FSC-Certified products can be applied to both MR Credit 6 (rapidly renewable materials) and MR Credit 7 (certified wood) below.

MR Credit 7: Certified Wood

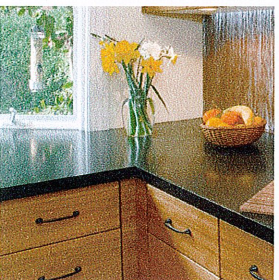
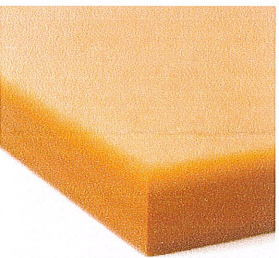
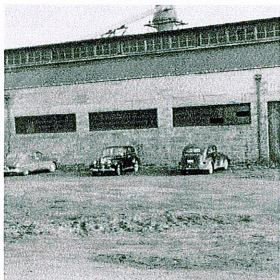
Use a Richlite FSC-Certified product and apply it to two points, not just one. 30% of Richlite's FSC-Certified product uses eucalyptus fibers (a rapidly renewable material under MR Credit 6).

IEQ Credit 4.4: Low-Emitting Materials: Composite Wood & Agrifiber Products

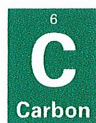
Richlite contains no urea formaldehyde. In addition, all Richlite products are GREENGUARD Certified for Children & Schools – the highest rating GREENGUARD supplies. Also note that 100% of the VOC's created during manufacturing are destroyed.

ID Credit 1: Innovation in Design

Richlite has seen its material used in some very unique and sustainable ways in building projects. Richlite will provide the form...you provide the function.



Richlite Company
888.383.5533
www.richlite.com
info@richlite.com



Carbon Footprint

In order to understand how to become more sustainable and develop a platform which to base decisions from, Richlite began tracking emissions in 2005 using the Greenhouse Gas Protocol (GHG Protocol). Our goal is to reduce CO2 emissions 30% by 2010.



WE™ Technology

During manufacturing, the waste from processing our raw materials is converted into energy used to sustain our heating system. This technology has reduced our fuel consumption on our manufacturing line by over 80%.

MATERIAL SAFETY DATA SHEET

Richlite® – RainShadow™ – Whalelite® – Whaleboard® – Skatelite® – Paper Composite Materials

Section 1: Ingredients

Chemical Family: Cured Phenol-formaldehyde

Product Use: Various within modeling and pattern making industries.

Hazard Statement: This material safety data sheet (MSDS) has been prepared in compliance with the Federal OSHA Hazard Communication Standard 29 CFR 1910.1200. This product is not considered to be a hazardous chemical under that standard.

Section 2: Physical Data

Appearance: Tan, odorless flat sheets

Percent Volatile: 0 (zero)

Insoluble in water

Specific Gravity: 1.24

Section 3: Fire and Explosion Data

Extinguishing media: Self extinguishing; remove source of heat.

Special fire fighting procedures: Use self-contained breathing apparatus.

Unusual fire and explosion data: Combustion products may be toxic.

Section 4: Reactivity Data

Stability: Stable

Conditions to Avoid: Excessive Heat for prolonged periods.

Incompatibility: Very strong alkali

Hazardous Decomposition Products: Combustion may form toxic materials. Oxides of carbon and nitrogen, benzene, toluene, methane, phenol, formaldehyde.

Hazardous Polymerization: Will not occur.

Section 5: Health Hazard Data

Primary Routes of Exposure: Eye, dermal, ingestion or inhalation of dust from abraded material.

Threshold Limit Value: Not hazardous

Overexposure effects: Completely crosslinked phenol-formaldehyde resin is inert and non-toxic.

Eye Contact: Dust that contacts the eye may be irritating or cause mechanical injury.

Skin Contact: May cause slight skin irritation.

Ingestion: It is reasonable to anticipate ingestion of the dust would be irritating to the GI tract.

Inhalation: Dust may be irritating to the respiratory tract and cause coughing or sneezing.

Section 6: First Aid Measures

Eyes: Immediately flush eyes with water for at least 15 minutes. See a physician if irritation persists.

Skin: Wash with soap and water. See a physician if irritation persists.

Ingestion: No harmful effects anticipated. See a physician if irritation persists.

Inhalation: No harmful effects are anticipated. If a problem develops, remove the person to fresh air and supply of oxygen if necessary.

Section 7: Special Protection Information

Ventilation: General mechanical and local exhaust in accordance with ACGIH recommendations.

Protective Gloves: Wear gloves as a standard handling procedure.

Eye Protection: Dust-tight goggles are recommended during material abrading operations.

Respiratory Protection: Use NIOSH approved dust mask if required.

Section 8: Special Precautions

Handling precautions: Nuisance dust may be generated during some material machining processes.

Section 9: Regulatory Information

DOT Proper shipping name: Plastic Laminate Sheets

DOT Hazard Class: N/A

RCRA Status: Not a hazardous waste under RCRA (40 CFR 261)

SARA/TITLE III - Toxic chemicals list: This product does not contain a toxic chemical for routine annual toxic chemical release reporting under

Sec. 313 (40 CFR 372)

Issued 1/20/2011 by S. O'Day, Vice President

RAINIER RICHLITE COMPANY
624 East 15th Street – Tacoma, WA 98421
253 383 5533
TF 888 383 5533

**BOLT.R13554
Hardboard**[Page Bottom](#)**Hardboard**[See General Information for Hardboard](#)**RICHLITE CO**624 E 15TH ST
TACOMA, WA 98421 USA

R13554

Uncoated hardboard paneling.

Flame spread	25
Smoke developed	40

Last Updated on 1999-10-05

[Questions?](#)[Print this page](#)[Notice of Disclaimer](#)[Page Top](#)

Copyright © 2011 Underwriters Laboratories Inc.®

The appearance of a company's name or product in this database does not in itself assure that products so identified have been manufactured under UL's Follow-Up Service. Only those products bearing the UL Mark should be considered to be Listed and covered under UL's Follow-Up Service. Always look for the Mark on the product.

UL permits the reproduction of the material contained in the Online Certification Directory subject to the following conditions: 1. The Guide Information, Designs and/or Listings (files) must be presented in their entirety and in a non-misleading manner, without any manipulation of the data (or drawings). 2. The statement "Reprinted from the Online Certifications Directory with permission from Underwriters Laboratories Inc." must appear adjacent to the extracted material. In addition, the reprinted material must include a copyright notice in the following format: "Copyright © 2011 Underwriters Laboratories Inc.®"

An independent organization working for a safer world with integrity, precision and knowledge.

